



Kaiser Permanente Thriving Schools

At Kaiser Permanente, we're committed to health in all the places where people live, learn, work, and play. Schools play a central role in our communities and in our lives. So how can we support schools to be more healthy and vibrant places of learning and development?

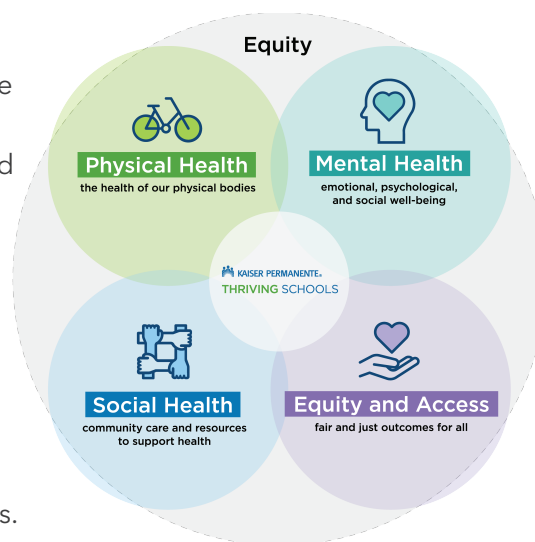
We believe it starts with partnership and collective action. Schools are passionate about ensuring that all students succeed. They need community support to address the health of their employees and students. That's why Kaiser Permanente created Thriving Schools.

We're committed to serving as a valuable partner in health to schools and districts across the country, helping to ensure that teachers, staff, students, and families have the support they need to thrive – in learning and in health.

Our Integrated Approach

Thriving Schools brings together Kaiser Permanente's extensive health care expertise and our partnerships with nationally recognized and trusted organizations working in education and health to support schools in becoming a beacon of health in their community.

We take an integrated approach to healthy schools, curating the best thinking and guidance on how to keep students, staff, teachers, and families healthy across four dimensions of health. By incorporating health-related strategies into school and district improvement efforts, we're supporting school communities in advancing their wellness and educational goals.






Visit our website for more information about
KAISER PERMANENTE THRIVING SCHOOLS offerings.

kp.org/thrivingschools

What We Do

Kaiser Permanente Thriving Schools uses a multi-tiered strategy for building healthy schools by engaging school communities directly with specific programming (e.g. training modules, Educational Theatre, grants, assessments, technical assistance, webinars); offering a broad array of resources that any school can access at no cost; and convening important conversations that support greater integration and alignment among the education and health care sectors to strengthen the total health of the school community.

STRATEGY	DESCRIPTION	EXAMPLES
 MOVEMENT BUILDING: Strengthen the field	Support policy efforts, convenings, and campaigns that advance health in schools.	Convening the National Healthy Schools Collaborative by bringing together nationally recognized and trusted organizations working for healthy schools. Hosting or sponsoring convenings with state and local officials to bring attention to the intersection between health and education.
 BROAD REACH: Provide resources and support for all	Provide a broad range of tools to strengthen the health of school communities across the country.	Providing assessments, technical assistance, and other resources that enable schools and districts to take action on various healthy school improvements. Developing and sharing curricula designed to support health and well-being for students and staff.
 INTENSIVE SUPPORT: Partner with select schools and districts	Partner directly with select schools and districts in Kaiser Permanente regions to readily implement Thriving Schools initiatives.	Activation grants to address gaps/goals for equity, health access, physical/mental/social health as identified in the Thriving Schools Integrated Assessment. Provide Educational Theatre programming to schools in Kaiser Permanente regions.

Thriving Schools places a strong focus on the health and well-being of school employees as well as students and families, because we understand that healthy schools begin with healthy teachers and staff. Our programming is uniquely designed to support school employee well-being through policies and practices that benefit everyone.

Join Us

Join us in advocating for and helping transform our nation's schools into centers of health, wellness, learning, and possibility for all people. Our vision is that every school across the nation has equitable access to supports for physical, mental, emotional, and social well-being so that every school succeeds, every school employee excels, and every child thrives. Visit kp.org/thrivingschools to tap into resources and ideas you can use to build a healthy school community today.